

Autonoma 

World Para Powerlifting  
Portfolio

About us!



**Autónoma** is a sports clothing brand located in Bogota (COL), created in 2019 by a women's group, with the aim to produce competition dresses for athletes with different disabilities fitting better and providing to them autonomy, considering clothes as part of the items that can prevent or increase the autonomy for people.

In the beginning, we were focused on the sport of Para Powerlifting designing lifting suits trying to be close to the athletes' ideas and overall making them feel properly dressed. Currently, we are designing sports and casual wear with the same idea, to make people feel comfortable and autonomous with our products. Additionally, our clothes can be used for people with or without any kind of disability because of the wide sizes options we offer, and the customization of our products.



# World Para Powerlifting Production

- Approved supplier since 2023.
- Customized products with high quality and fair Price.
- 100% Colombian materials, design and production.
- Attention in Spanish, Portuguese and English.
- Trouble-free communication, payment process and delivery.
- Satisfaction guaranteed.



# World Para Powerlifting Approved Supplier



# Production Timeline

- If you want to order our products for your NPC/NF follow this timeline according to the date Autonomia ships your order to your country. Each day is related to the shipping day. The total will be 35 days from the pre-order date until the shipping day (if the NPC acts according to the timeline chart). Bear in mind that the delivery time will depend on the distance between your country and Colombia (it can take between 15 to 20 calendar days).
- Our services include design, but if you have your own, we can work on this.



# Production Timeline

<i>Date</i>	<i>Timeline</i>
<i>Shipping</i>	<i>Day 0</i>
<i>Production start</i>	<i>20 days prior day 0</i>
<i>First payment</i>	<i>25 days prior day 0</i>
<i>Final order</i>	<i>25 days prior day 0</i>
<i>Final design approval</i>	<i>25 days prior day 0</i>
<i>Designs for approval</i>	<i>30 days prior day 0</i>
<i>Pre-order</i>	<i>35 days prior day 0</i>



# Steps description

- **Shipping day:** It is the date when Autonomia give the products to the delivery company. (Autonomia will send all the products via DHL or FedEx)
- **Production starts day:** It is the day when Autonomia starts tailoring the products ordered.
- **First payment:** It is the first transfer any NPC/NF must do in order for the production to start. It is equivalent to 50% of the total price of the order.





# Steps description

- **Final order:** It is the last agreement between the NPC/NF and Autonomia to produce the items.
- **Final design approval:** It is the final design choice for the ordered items. It must be approved by the NPC/NF.
- **Designs for approval:** It is the sending file of the three-design proposal by Autonomia to the NPC/NF. (This step will not be necessary if the NPC/NF sends their own design to Autonomia)



# Steps description

- **Pre-order:** It is the first contact between the NPC/NF and Autonomia. In this first approach, Autonomia will receive all the basic details from the NPC/NF to start the process.
- Note: If the NPC/NF does not follow the production timeline, its order can take longer than the estimated time. In this case, the client is responsible for any extra time spent on the production.
- **Final payment:** The NPC/NF must transfer the last 50% of the price as soon as Autonomia production is finished. Autonomia will send an invoice including the shipping fee which must be paid for the customer.



# Design process

- Autónoma will produce two design options according to the first approach with the client.
- The client will check, ask for adjustments when necessary.
- Autónoma and the client will do the final review to obtain the final approval to start the production.



# Products Characteristics



\* Images used in this section are references. Specific characteristics and official logos will be adjusted according to the rules in the actual clothes.



# Lifting Suit – Cotton version

- Composition: Cotton 87% - Elastane 13%
- Available: in short and long leg-sleeves
- Printing: Textile Vinyl
- Sizes: from 3XS to 5XL
- Price: 65 USD



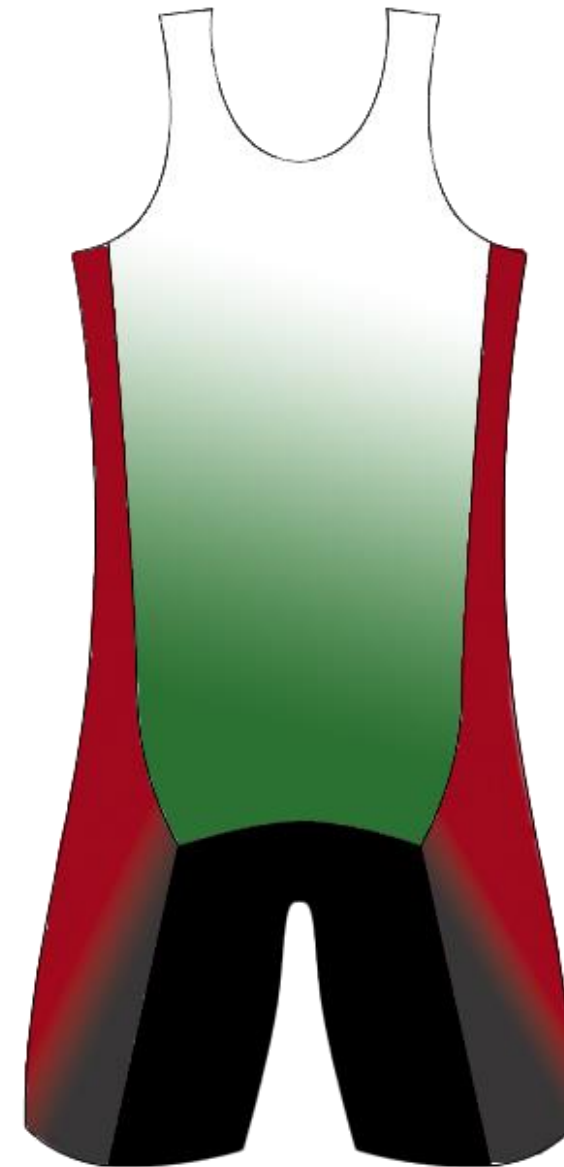
Fully compliant and adjusted to WPPD Rules and Regulations -  
Appendix 4

# Lifting Suit – Polyester version

- Composition: Recycled Polyester 81% - Elastane 19%
- Available: in short and long leg-sleeves
- Printing: Sublimation
- Sizes: from 3XS to 5XL
- Price: 65 USD

Fully compliant and adjusted to WPPD Rules and Regulations -Appendix 4





# T-Shirt

- Composition: Cotton 95% - Elastane 5%
- Printing: Textile Vinyl
- Sizes: from 3XS to 5XL
- Price: 15 USD



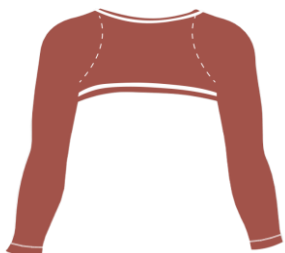
Fully compliant and adjusted to WPP0 Rules and Regulations -  
Appendix 4



# Shoulder Wrap with Sleeves



- Composition: Recycled Polyester 81% - Elastane 19%
- Printing: Textile Vinyl
- Sizes: from 3XS to 5XL
- Price: 14 USD



Fully compliant and adjusted to WPP0 Rules and Regulations - Appendix 4



# Pair of Sleeves

- Composition: Recycled Polyester 81% - Elastane 19%
- Printing: Textile Vinyl
- Sizes: from 3XS to 5XL
- Price: 12 USD

Fully compliant and adjusted to WPP0 Rules and Regulations - Appendix 4



# Bench Straps

- Composition: Cotton 100%
- Printing: Textile Vinyl
- Size customized according to the athlete's needs between 7.5 – 10 cm width, and 160 – 220 cm length.
- Price: 13 USD



Fully compliant and adjusted to WPPD Rules and Regulations -  
Appendix 4



# Polo T-Shirt

- Composition: Polyester 100%
- Printing: Textile Vinyl
- Sizes: from 3XS to 5XL
- Price: 18 USD



# Warm Tracksuit

- Composition: Recycled Polyester 100%
- Printing: Textile Vinyl
- Sizes: from 3XS to 5XL
- Price: 112 USD



# Light Tracksuit

- Composition: Anti fluid Polyester 100%
- Printing: Textile Vinyl
- Sizes: from 3XS to 5XL
- Price: 102 USD



# Measures guides

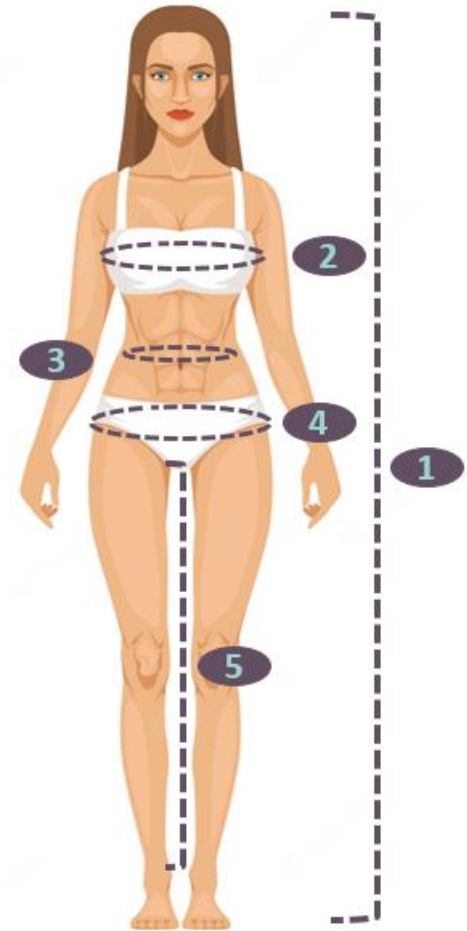
Autónoma customized each clothe depending on specific athlete characteristics. Use this measures guides to provide us all the information required to produce the best apparel for your athletes.



# Measures guide (for women)

## Lifting suit

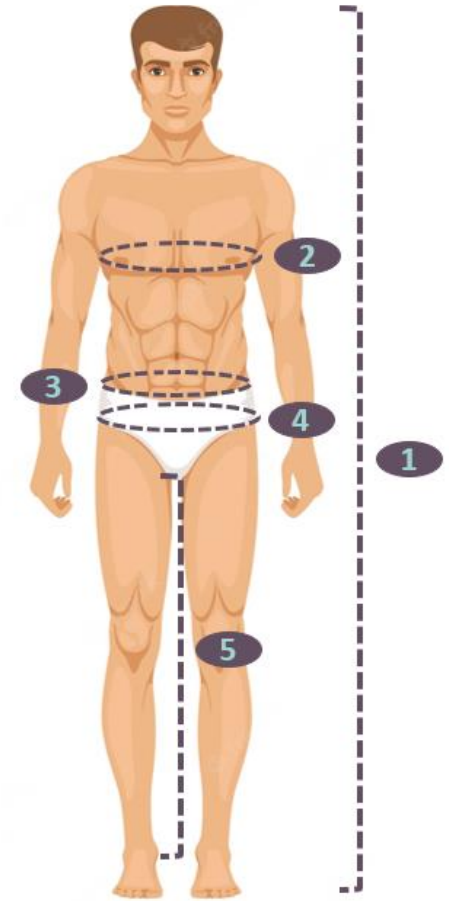
- Remember to provide us the bodyweight of the athlete.
  1. Athlete's stature.
  2. Chest contour.
  3. Waist contour (in the thinnest part of the abdomen).
  4. Hip contour (in the largest part of the hip).
  5. Crotch (from the crotch to the knee when you are ordering a short version/ from the crotch to the ankle when you are ordering a long version)



# Measures guide (for men)

## Lifting suit

- Remember to provide us the bodyweight of the athlete.
  1. Athlete's stature.
  2. Chest contour.
  3. Waist contour (in the largest part of the abdomen).
  4. Hip contour (in the largest part of the hip).
  5. Crotch (from the crotch to the knee when you are ordering a short version/ from the crotch to the ankle when you are ordering a long version).

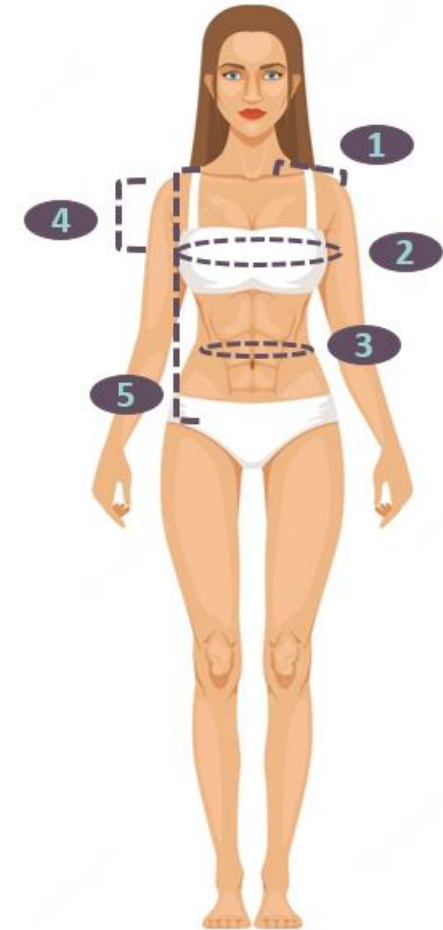




# Measures guide (for women)

## T-shirt and Polo Shirt

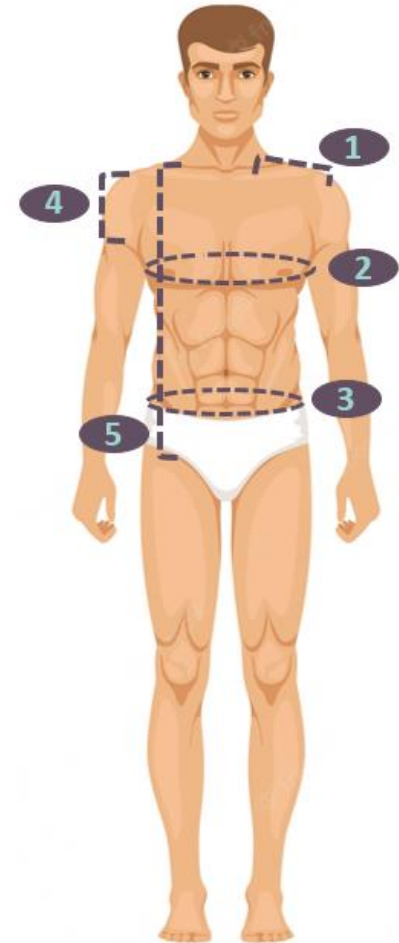
1. Distance from the neck to the shoulder.
2. Chest contour.
3. Waist contour (in the thinnest part of the abdomen).
4. Distance from the acromion to the middle part of the humerus.
5. Distance from the clavicle to the hip line.



# Measures guide (for men)

## T-shirt and Polo Shirt

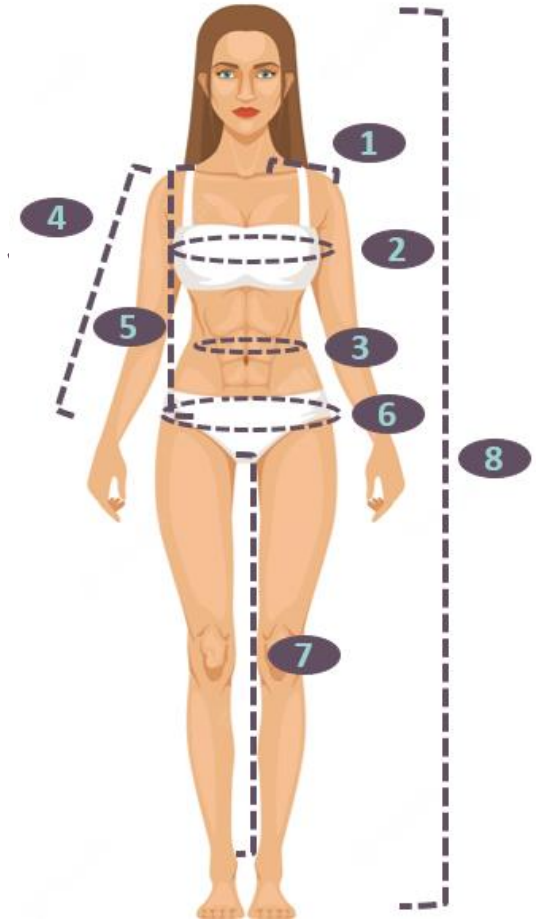
1. Distance from the neck to the shoulder.
2. Chest contour.
3. Waist contour (in the largest part of the abdomen).
4. Distance from the acromion to the middle part of the humerus.
5. Distance from the clavicle to the hip line.



# Measures guide (for women)

## Tracksuit

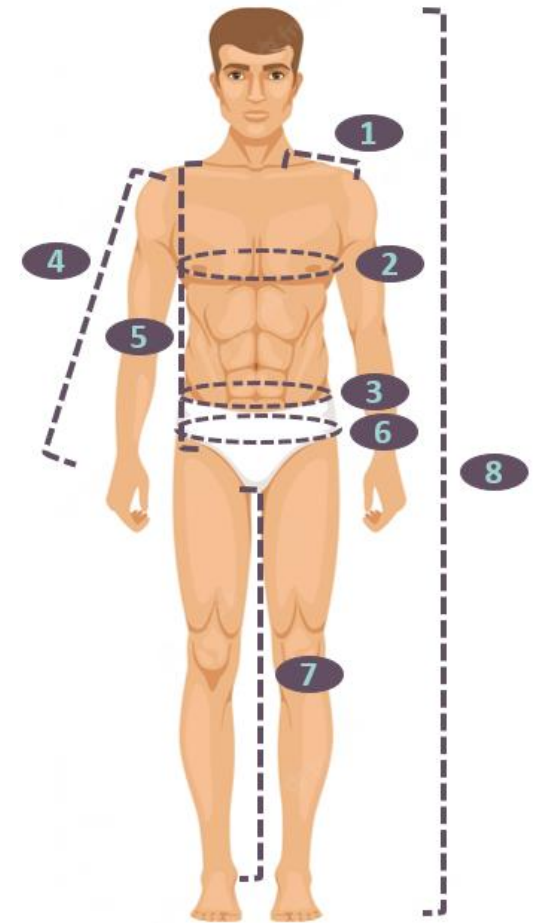
1. Distance from the neck to the shoulder.
2. Chest contour.
3. Waist contour (in the thinnest part of the abdomen).
4. Distance from the acromion to the wrist.
5. Distance from the clavicle to the hip line.
6. Hip contour (in the largest part of the hip).
7. Crotch (from the crotch ankle).
8. Athlete's stature.



# Measures guide (for men)

## Tracksuit

1. Distance from the neck to the shoulder.
2. Chest contour.
3. Waist contour (in the largest part of the abdomen).
4. Distance from the acromion to the wrist.
5. Distance from the clavicle to the hip line.
6. Hip contour (in the largest part of the hip).
7. Crotch (from the crotch ankle).
8. Athlete's stature.



FAQ

# FAQ

- Can I use my design?
  - Yes, if you have a design we can produce it.
- How long is all the process?
  - Including order, production and shipping process it can spend around 5 weeks.
- How is the shipping procedure?
  - All our products are delivered via FedEx or DHL. Shipping price is covered by client.

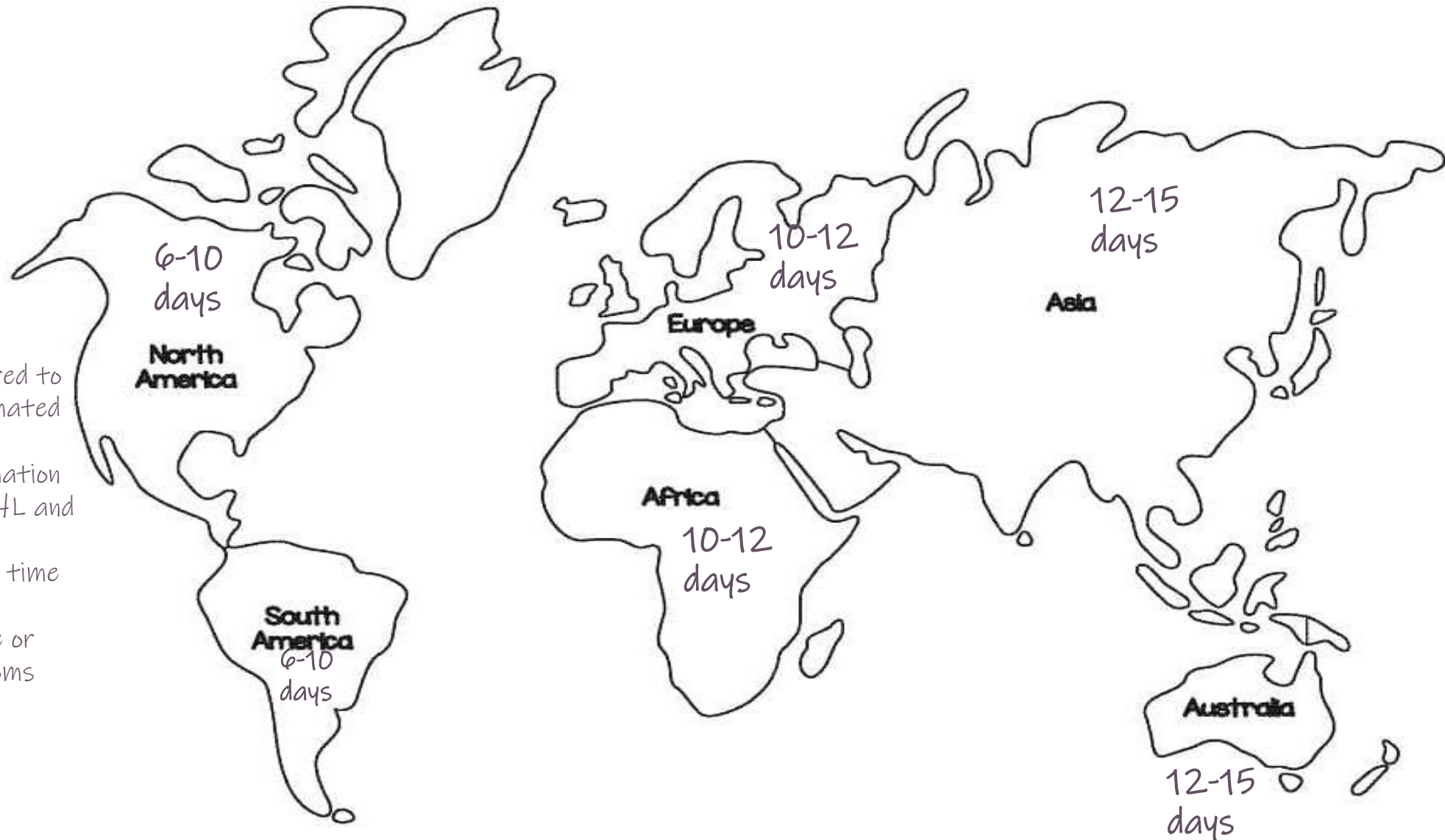


# FAQ

- Can sponsors appear in the apparel?
  - Yes, if you have a sponsor we will print it according to the measures accepted in the WPPD Rules & Regulations Appendix 4.
- Which currency is accepted for the payment?
  - Payment is accepted in USD.



# Shipping timeline map.



\* Times referred to here are estimated based on the current information provided by DHL and FedEx. It can change at any time if any of their politics change or the local customs authorities' procedures.





# Let's talk!



[ropautonoma@gmail.com](mailto:ropautonoma@gmail.com)



+57 302 798 77 84 (text only)



@autonoma\_co

